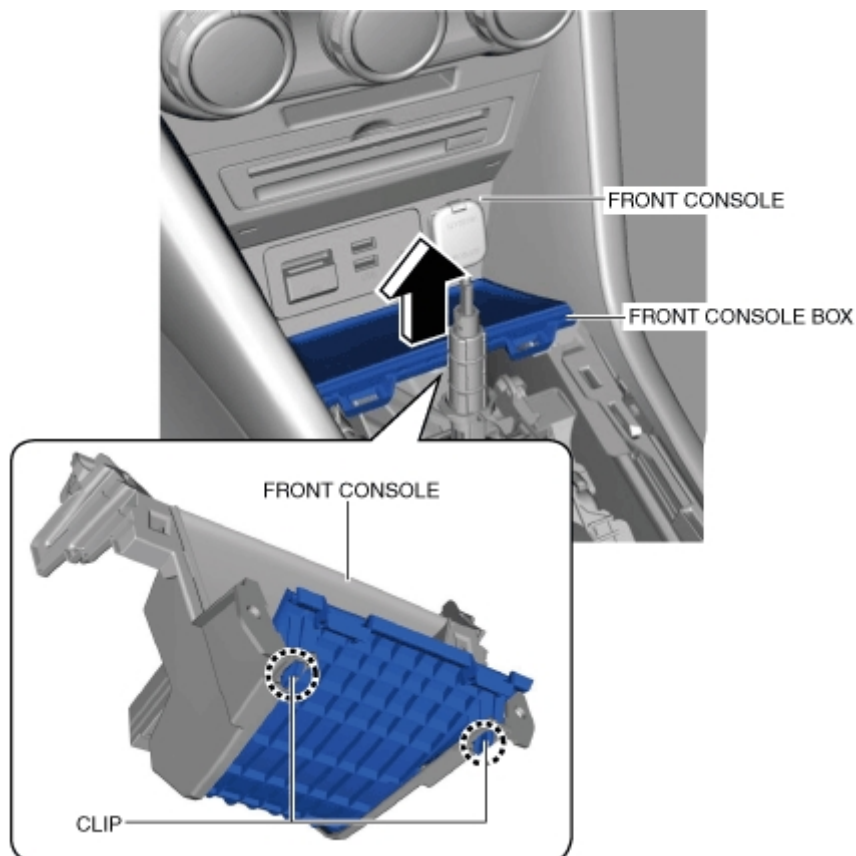


FRONT CONSOLE BOX REMOVAL/INSTALLATION

id091700602300

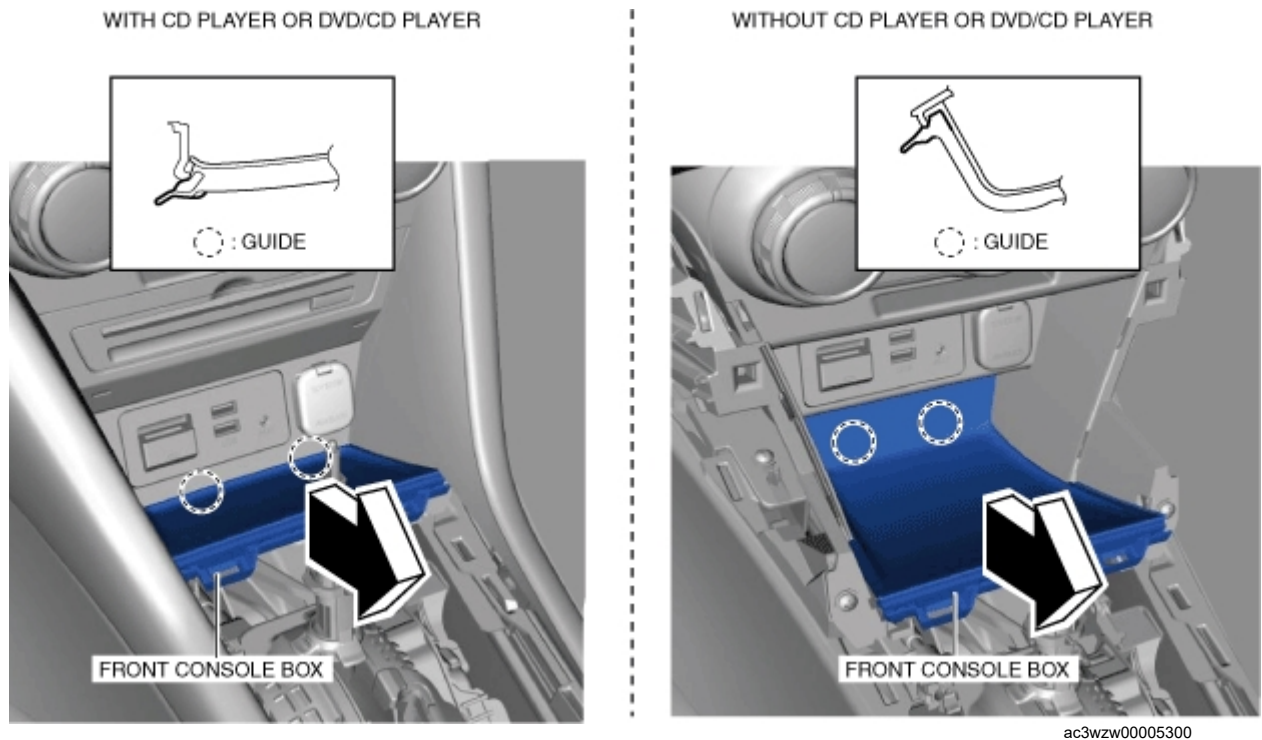
With Electric Parking Brake

1. Disconnect the negative battery cable.
2. Remove the following parts:
 - (1) Console side panel (See [CONSOLE SIDE PANEL REMOVAL/INSTALLATION.](#))
 - (2) Switch panel No.2 (See [SWITCH PANEL REMOVAL/INSTALLATION.](#))
 - (3) Shift lever knob (MTX) (See [MANUAL TRANSAXLE SHIFT MECHANISM REMOVAL/INSTALLATION \[C66M-R, C66MX-R\].](#))
 - (4) Selector lever knob (ATX) (See [AUTOMATIC TRANSAXLE SHIFT MECHANISM REMOVAL/INSTALLATION.](#))
 - (5) Shift panel (See [SHIFT PANEL REMOVAL/INSTALLATION.](#))
3. Move the front console box in the direction of the arrow shown in the figure and detach the clips from the front console.



ac3wzw00005299

4. Remove the front console box in the direction of the arrow shown in the figure while detaching the guides.

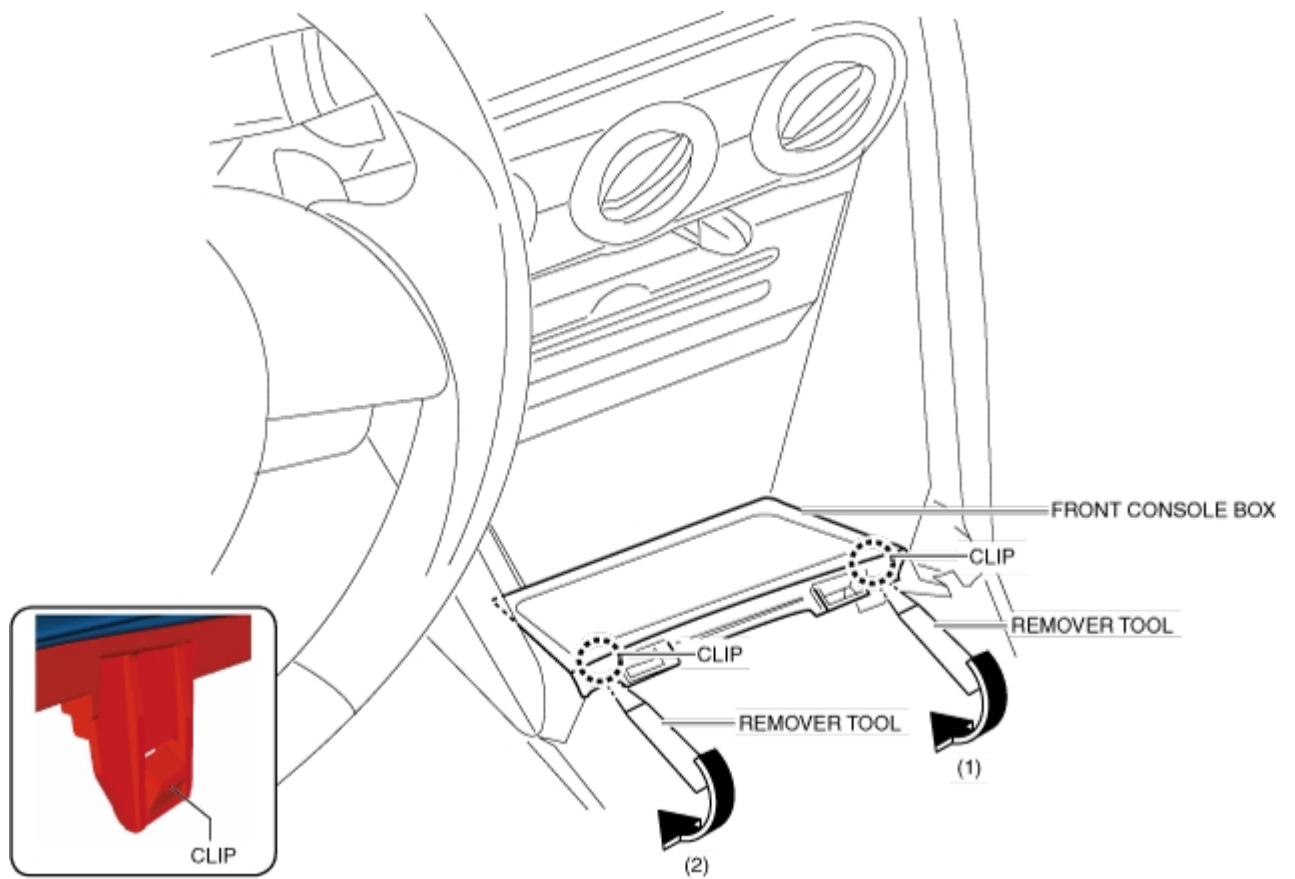


ac3wzw00005300

5. Install in the reverse order of removal.

Without Electric Parking Brake

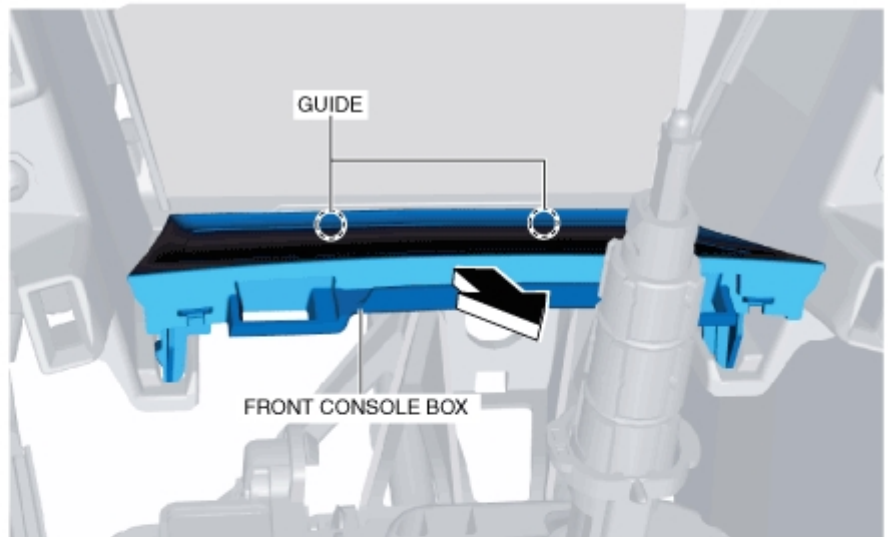
1. Disconnect the negative battery cable.
2. Remove the following parts:
 - (1) Center console tray (See [CENTER CONSOLE TRAY REMOVAL/INSTALLATION.](#))
 - (2) Shift lever knob (MTX) (See [MANUAL TRANSAXLE SHIFT MECHANISM REMOVAL/INSTALLATION \[C66M-R, C66MX-R\].](#))
 - (3) Selector lever knob (ATX) (See [AUTOMATIC TRANSAXLE SHIFT MECHANISM REMOVAL/INSTALLATION.](#))
 - (4) Shift bezel (See [SHIFT BEZEL REMOVAL/INSTALLATION.](#))
 - (5) Upper panel (See [UPPER PANEL REMOVAL/INSTALLATION.](#))
 - (6) Shift panel (See [SHIFT PANEL REMOVAL/INSTALLATION.](#))
 - (7) Console side panel (See [CONSOLE SIDE PANEL REMOVAL/INSTALLATION.](#))
3. Insert a remover tool in the position indicated by arrow (1) in the figure and detach the clip.



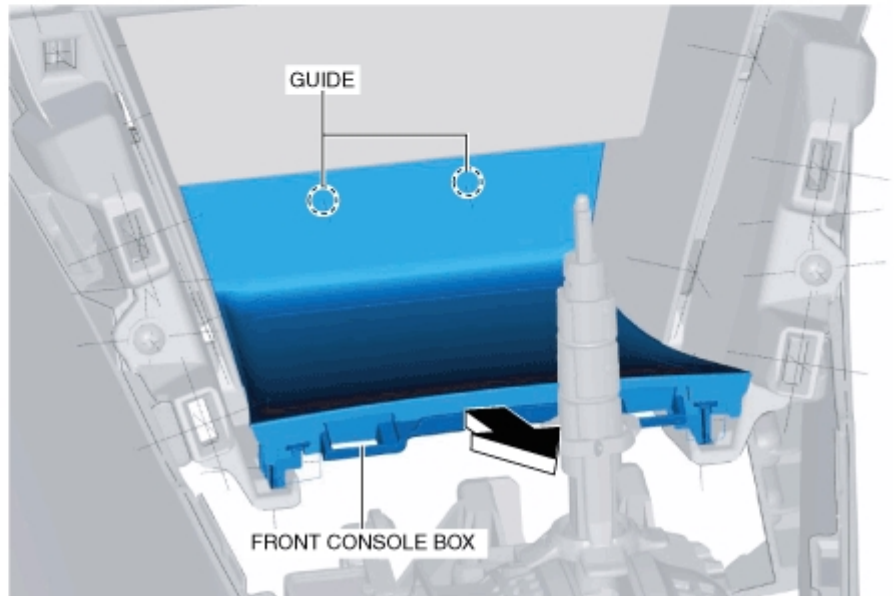
ac3wzw00002896

4. Insert a remover tool in the position indicated by arrow (2) in the figure and detach the clip.
5. Remove the front console box in the direction of the arrow shown in the figure while detaching the guides.

WITH CD PLAYER OR DVD/CD PLAYER



WITHOUT CD PLAYER OR DVD/CD PLAYER



ac3wzw00004357

6. Install in the reverse order of removal.